

# Cordis EXOSEAL™

Vascular Closure Device

CORDIS EXOSEAL™ VCD



## Maximise Clinical Safety\*

An approach to secure  
and easy closure

There were no MAEs (defined below) or deaths during the ECLIPSE trial confirming noninferiority of the EXOSEAL™ VCD compared with manual compression with respect to the primary safety endpoint.

MAE was defined as: 1) need for vascular repair by surgical or nonsurgical techniques; 2) bleeding requiring a blood transfusion; 3) infection requiring antibiotics, extended hospitalization, or both; 4) new onset ischemia of the ipsilateral lower extremity; 5) need for surgical repair of access-site-related nerve injury; or 6) permanent access site-related nerve injury.

**Cordis**™  
A Cardinal Health company

**Access, Diagnose  
and Treat with  
the Complete Line  
of Products and  
Services from Cordis**

# Why EXOSEAL™

Vascular Closure Device?

Cordis EXOSEAL™  
Vascular Closure Device.

**Combining clinical *safety*\*  
and *ease-of-use*, the Cordis  
EXOSEAL™ Vascular Closure  
Device means a more confident  
close and improved patient  
outcomes.**

- Easy-to-Use Functionality
- Trusted Bioabsorbable Technology
- Precise Extravascular Closure
- Excellent Clinical Results\*

# Product Features

## Cordis **EXOSEAL**<sup>TM</sup> Vascular Closure Device

### Maximise Clinical Safety\* in Closure

Designed for accurate placement and secure extravascular deployment\*



#### Deployment Button

Lockout feature reduces risk of intravascular plug deployment.



#### Indicator Window

Provides indication of extravascular position before deployment.



#### Sheath Adapter & Wire Loop Release

- Compatible with introducer sheath (sheath exchange not required)\*\*



#### Bleed-Back System

Provides visual indicator for secure extravascular plug deployment.



#### Indicator Wire

Nitinol indicator wire provides gentle and precise feedback to ensure extravascular plug placement.

Cordis **EXOSEAL**<sup>TM</sup> Vascular Closure Device provides **precise** and **secure** extravascular arterial closure.

\*\*Compatible with sheaths up to 12 cm.

**Bioabsorbable Technology**



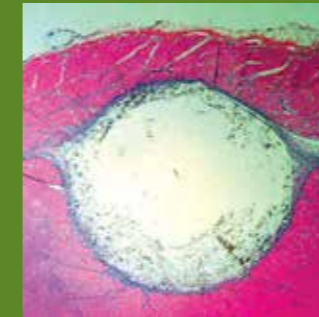
# Clinically **Safe\*** and

## Trusted, Synthetic Plug Closure

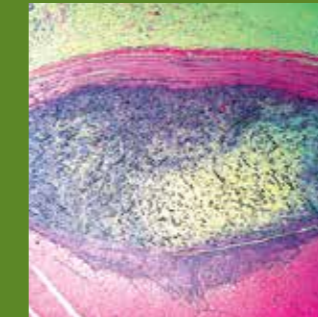
The Cordis EXOSEAL™ Vascular Closure Device uses a Polyglycolic Acid (PGA) plug material to securely close the femoral artery puncture site while causing low tissue reactivity to minimise access site complications.\*

## Plug Absorption Characteristics

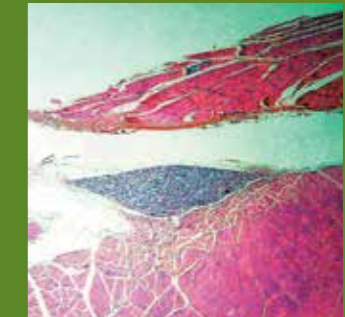
PGA plug material absorption and tissue reaction assessment in rat gluteal model<sup>1</sup>



3 Days



14 Days



60 Days

# Effective

### Why a PGA Plug is Safe\*:

- PGA has a long history in medical use
- Fully resorbed within 60-90 days

<sup>1</sup> Data on file at Cordis

## Secure Extravascular Closure

- Confident, extravascular positioning of bioabsorbable plug
- Plug is held securely in place by surrounding tissue

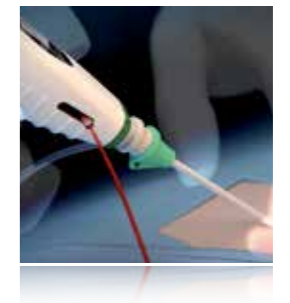


## Secure and Precise Extravascular Placement

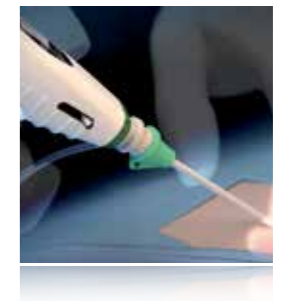
- Deploys extravascularly to avoid impeding arterial blood flow
- Provides two visual signals to increase operator confidence and patient comfort



**BLACK-WHITE**  
Device not yet positioned to deploy.  
**Lockout feature activated.**



**BLACK-BLACK**  
Deploy, if significantly reduced bleed-back is also seen from bleed-back window.



**BLACK-RED**  
Release slight tension on device until window shows BLACK-BLACK.  
Otherwise switch to manual compression.





# Cordis **EXOSEAL**<sup>™</sup>

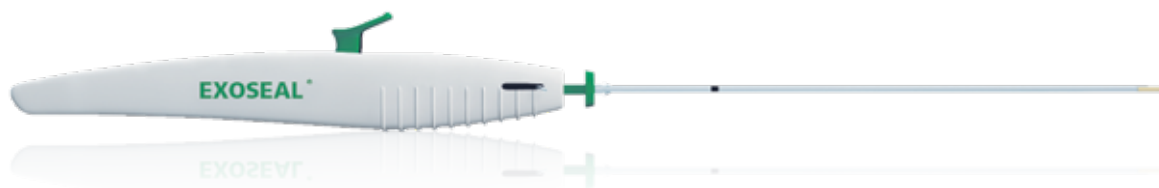
## Vascular Closure Device

For clinically safe\*, confident close resulting in improved patient outcomes, use the Cordis EXOSEAL<sup>™</sup> Vascular Closure Device

- **Easy-to-Use Functionality**
- **Trusted Bioabsorbable Technology**
- **Precise Extravascular Closure**
- **Excellent Clinical Results\***



CSI's FRENCH SIZE	CATALOGUE NUMBER	DESCRIPTION
5F	EX500CE	EXOSEAL™ - to be used with a 5 F sheath introducer up to 12 cm
6F	EX600CE	EXOSEAL™ - to be used with a 6 F sheath introducer up to 12 cm
7F	EX700CE	EXOSEAL™ - to be used with a 7 F sheath introducer up to 12 cm



**Cordis**<sup>™</sup>  
A Cardinal Health company

For more information please visit  
[www.cardinalhealth.co.uk](http://www.cardinalhealth.co.uk)



\*Clinical data from the "ECLIPSE Trial" indicates safety in terms of vascular injury, access site-related bleeding, infection or nerve injury, new ipsilateral lower extremity ischemia or SAE. Wong et al JACC Cardiovasc Interv. 2009 Aug;2(8):785-93.

For Healthcare Professionals Only.

Important information: Prior to use, refer to the instructions for use supplied with this device for indications, contraindications, side effects, suggested procedure, warnings and precautions. As part of its continuous product development policy, Cordis reserves the right to change product specifications without prior notification. Please contact your Cordis representative for additional product availability information.

CORDIS, Cordis LOGO, EXOSEAL are trademarks of Cardinal Health and may be registered in the US and/or in other countries. © 2020 Cardinal Health. All Rights Reserved. 100567923 09/2020